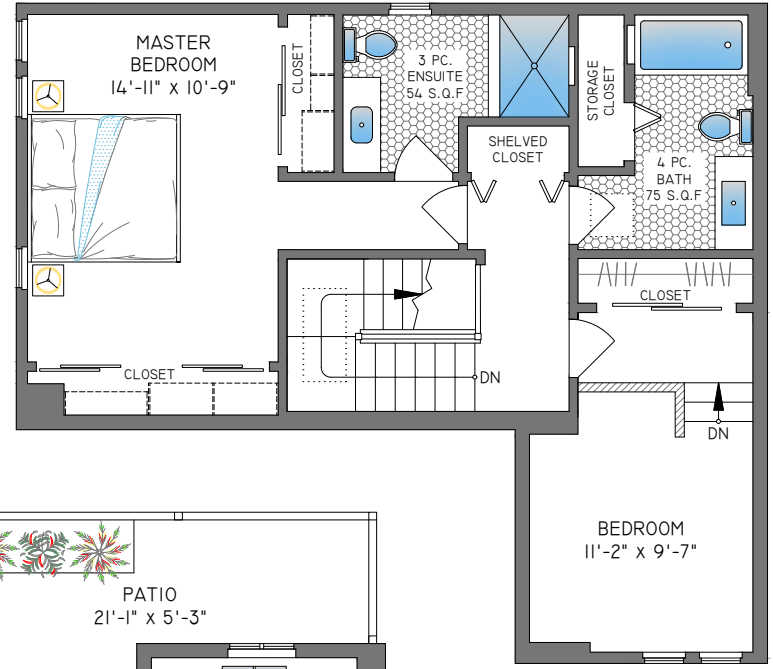
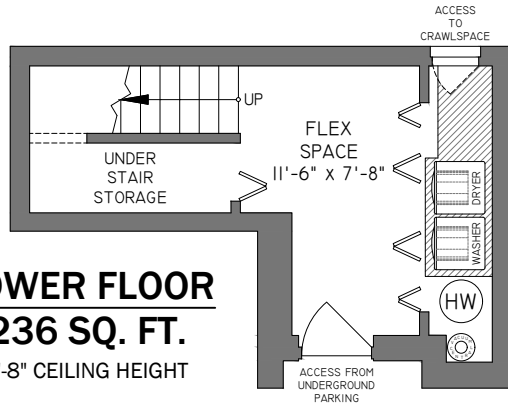


# GRANT GARDNER

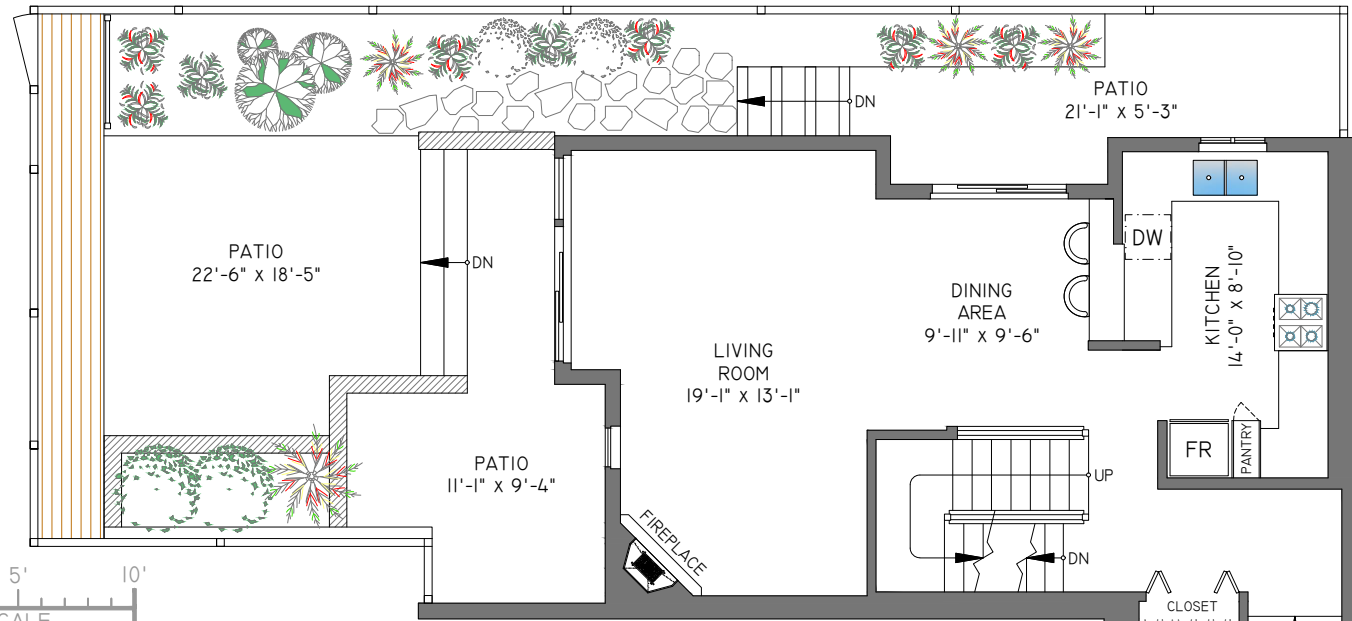
## ROYAL LePAGE SUSSEX

www.grantgardner.com  
 info@grantgardner.com  
 604-990-6468

**LOWER FLOOR**  
**236 SQ. FT.**  
 7'-8" CEILING HEIGHT



**UPPER FLOOR**  
**646 SQ. FT.**  
 8'-0" CEILING HEIGHT



**MAIN FLOOR**  
**762 SQ. FT.**  
 8'-0" CEILING HEIGHT



**#106 - 245 W 15TH STREET, NORTH VANCOUVER**

FLOOR	AREA (SQ. FT.)	
	FINISHED	PATIO
MAIN	762	731
UPPER	646	-
LOWER	236	-
<b>TOTAL</b>	<b>1644</b>	<b>731</b>



Booked on the Pixilink App™



(COVERED) ENTRANCE

**ROYAL LePAGE** | **Sussex**

THE REPRESENTED FLOOR PLANS ARE NOT SUITABLE FOR CONSTRUCTION/ARCHITECTURAL PURPOSES. EVERY EFFORT HAS BEEN MADE TO REPRESENT ALL DIMENSION ACCURATELY, E&O INSURED. FINAL SQUARE FOOTAGE MAYBE OBTAINED FROM STRATA PLAN.