

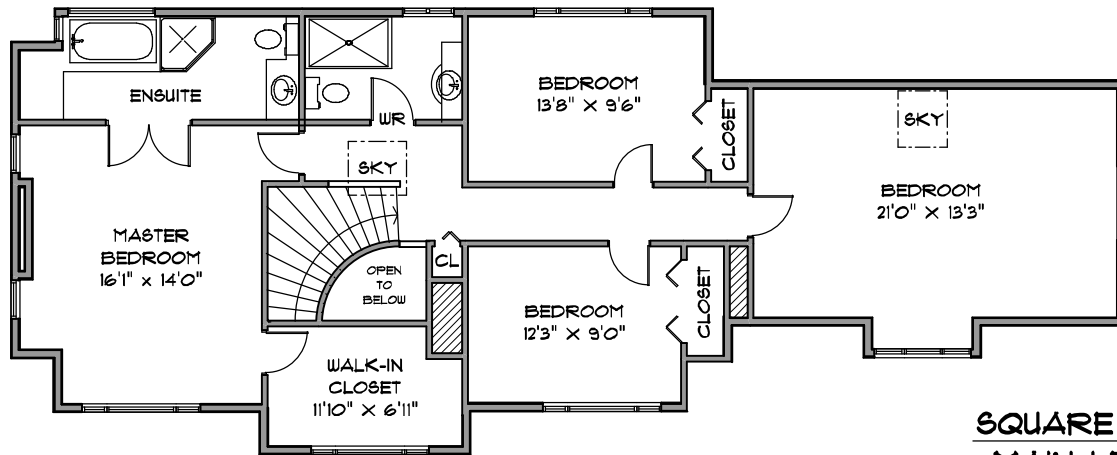


GRANT GARDNER TEAM

SYNERGY TO SIMPLIFY YOUR MOVE

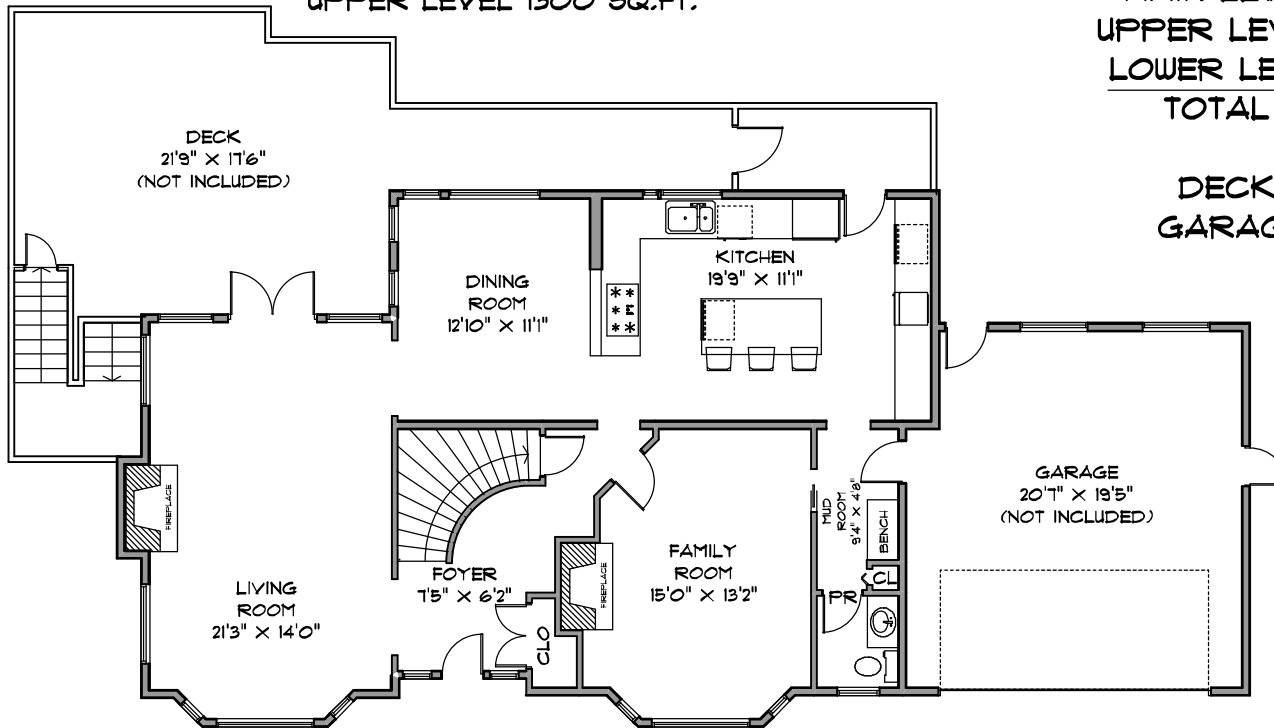
4175 ST.MARY'S AVENUE  
NORTH VANCOUVER

GRANT GARDNER  
604-250-4351

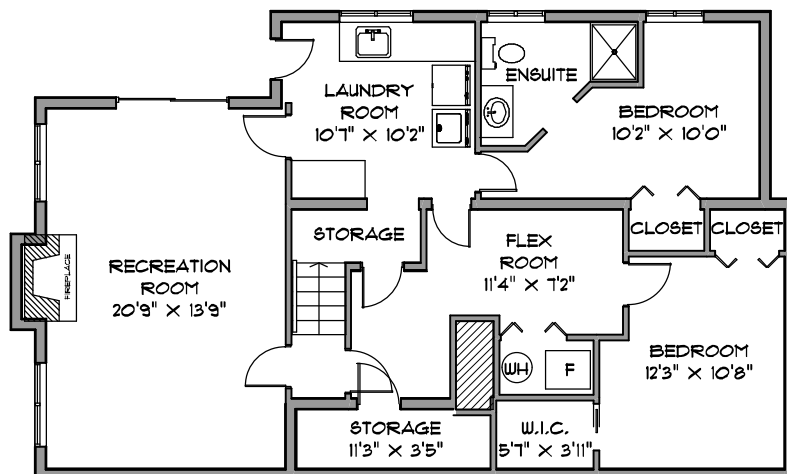


UPPER LEVEL 1300 SQ.FT.

SQUARE FOOTAGE  
MAIN LEVEL 1255  
UPPER LEVEL 1300  
LOWER LEVEL 1120  
TOTAL 3675

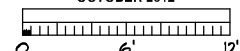


MAIN LEVEL 1255 SQ.FT.



LOWER LEVEL 1120 SQ.FT.

**FAB**  
FLOOR PLANS  
778-231-6542  
OCTOBER 2012



MEASUREMENTS SHOULD BE CONSIDERED APPROXIMATE AND ARE FOR PROMOTIONAL USE ONLY. E & OE Insured.